

## 72 MW Cogeneration Power Plant with GE LM5000

**Capacity:** 2 X 32 MW gas turbine  
1 x 8 MW steam turbine  
Total 72 MW

**Year Commissioned:** 1988

**Year Shut Down:** 2013

**(2) Gas Turbines:**

Manufacturer GE  
Model LM5000

**(1) Steam Turbine:**

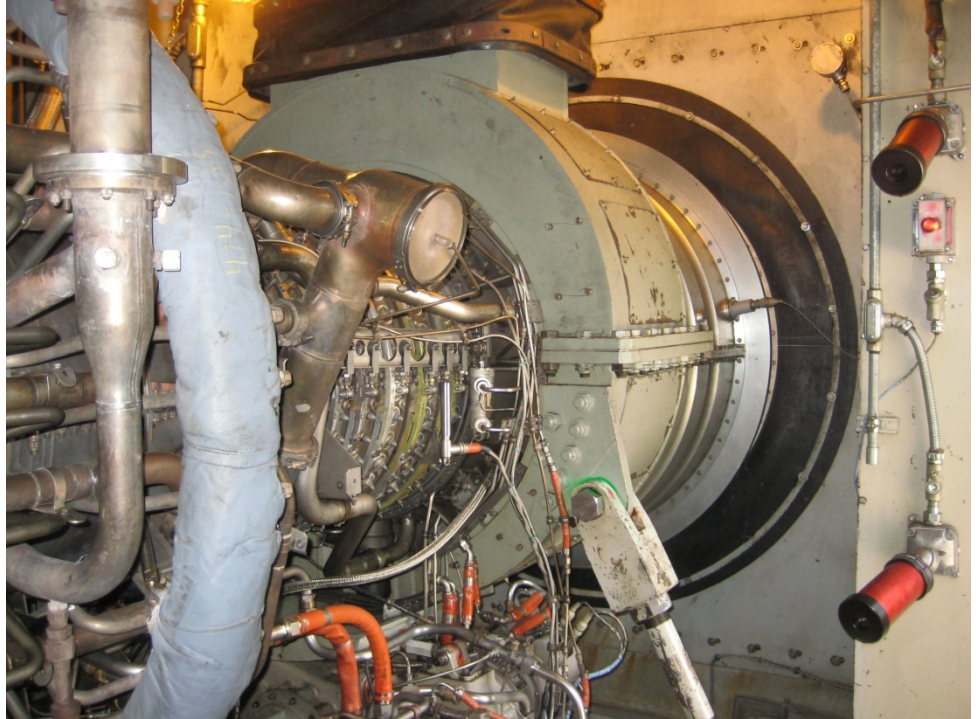
Manufacturer Westinghouse

**(2) Steam Turbine Generators:**

Manufacturer Deltak

**Other Major Equipment:**

GTA inlet filters  
GTA starter skid, motors and PLC  
GTA power turbine  
Generator lube oil system  
GTA / GTB Brush generator  
STG Brush generator  
Emergency diesel generator 500 KVA  
Transformer 13.8 KVA to 115 KVA  
Bypass transformer – inverter  
Surface condenser  
Vacuum system  
Hot water heating system  
Heat exchanger  
Distributive control system  
Condensate system  
Reverse osmosis water unit



### BRIEF PLANT DESCRIPTION

The cogeneration power plant has two (2) GE LM5000 gas turbines, two (2) Deltak heat recovery steam generators, one (1) steam turbine in combined cycle with steam used in a heat exchanger on the plant property to heat water. LM5000 is a popular model actively operating worldwide. GE built approximately 200 – 250 units. The plant has forced outage rate less than 1%. Its incremental heat rates at each power point is estimated at 8,700 BTU / KWh. NOx emission from this plant is 535 tons per year, and CO2 emission 45 tons per year. The plant is equipped with an emergency diesel generator 500 KVA and a 13.8 KVA to 115 KVA transformer. The plant has one (1) spare power turbine. The plant is permitted and has an electric interconnection as well as a natural gas connection. Both connections are PSCO / Xcel.

**For more information contact -**

**Dan O'Leary**

sales@phxequip.com

+1 732-442-6990

**To discuss plants you are selling -**

**Jesse Spector**

[jesse@phxequip.com](mailto:jesse@phxequip.com)

+1 732.709.7157 (Direct Dial)

+1 908.902.8854 (Mobile)