



## BIOFUELS / ETHANOL PILOT PLANT LIQUIDATION

### DESCRIPTION

Biofuels - Ethanol Demonstration Pilot Plant - Built 2012 – limited use. The pilot plant was based on patented technology (which is not for sale), which is based on converting cellulosic sugars to ethanol. Feedstock included corn stover, wood chips, sugarcane bagasse and switch grass. Major Process equipment includes:

- 475 Gallon AB stainless Steel Reactor, 150/100 FV, Built 2013 (Qty. 3)
- 14”D x 18’L KWS Stainless Steel Ribbon conveyor, 1HP, Built 2012 (Qty. 4)
- 200 Cu Ft Stainless Steel Ribbon Mixer, 3HP motor
- 1500 Gallon 316L Stainless Steel Vertical tank with Jacket, 2HP Agitation, Built 2011 (Qty. 12)
- 3000 Gallon 316L Stainless Steel Vertical tank. Built 2011 (Qty. 2)
- 5000 Gallon 316L Stainless Steel Vertical tank. Built 2011
- CIP Skid, 1200 gallon water tank, (2) 500 gallon solution tanks, pumps, A-B Controls, Built 2011
- 14”D Distillation Column system with reboiler, condenser, 50PSI/FV@240F, Built 2008
- 417 Sq Ft Hurst boiler. 4313 lb steam/hr, max 300psi, Power Flame burner, Built 2011
- 205 Sq Ft Hurst boiler. 1725 lb steam/hr, max 300psi, Power Flame burner, Built 2011
- 267 Ton York Air Cooled Screw Liquid Chiller, R-134, High/Low 350/235PSI, Built 2011
- 100 Gallon Northland Stainless Reactor, int 35 PSI/FV@250F, jack: 100PSI/FV@250F., Built 1991 (Qty. 2)
- 158 Gallon Lee Stainless Steel Reactor, int 40PSI@300F, Jack: 100@338F, Built 1999
- 63 Gallon New Brunswick Scientific Fermentation system, Bioflo Pro 300L, 40PSI@300F, built 2008
- Vincent Corp. Screw press. Model CP-6, 6”x32”, 5HP motor
- 40” Sweco three deck round vibratory screener, Built 2012
- 40” Sweco two deck round vibratory screener, Built 2012
- 185 Gallon Cherry Burrell Stainless Steel Reactor, 45/FV@250, jack: 100/FV@250, Built 1992
- 66 Gallon (250 Liter) Feldmeier Stainless Steel Reactor, 200/FV@400F, jack: 250/fv@400F, Built 2010
- IKA Mill. Model MK 50.
- IKA Mill. Model MK 20.
- IKA Mill. Model MK 2000/10.
- IKA Mill. Model DR 2000/10. (Qty. 2)
- IKA Mill. Model MK 4.
- NEW IKA Mill Model MK2000/50. (Qty. 4)
- IKA Mill. Model MK 2000/50.

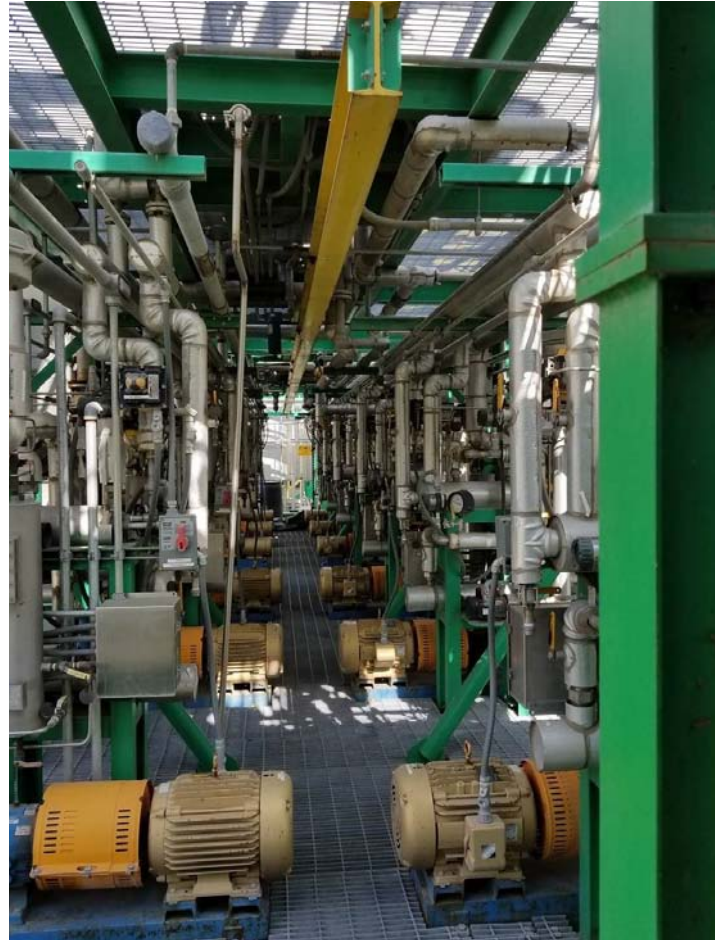




















#16429



#16406



#16417



#16405



#16403



#16402



#16493



#16417









#16428



#16460



#16466



#16464

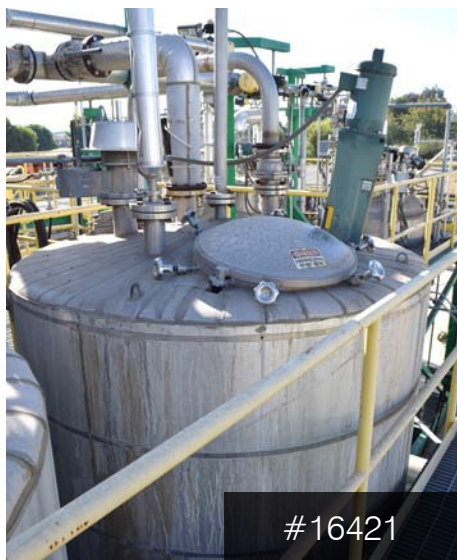


#16465



#16462





#16421



#16435



#16457



#16429



#16451



#16434



#16437



#16452