

## INCLUDES

*(1) GE Frame 6B 40 MW Gas Turbine (1) ABB Alstrom 20 MW Steam Turbine (1) Delta Star 42 MVA Substation Transformer (3) Boiler Feedwater Pumps (2) Cooling Towers (2) Air Compressors (3) Storage Tanks (1) Steam Turbine Condenser (1) Dump Condenser (1) High Pressure Bullet Tank (1) Bridge Crane*



### **7487 40 MW Gas Turbine Generator Set**

Used 40 MW General Electric PG6541B dual fuel natural gas and #2 oil gas turbine generator set, built 1989. The unit is a John Brown Package No. 295510, rated at 39,950 KW, air inlet temp. 60 F, 5105 RPM. Turbine is connected to a brush synchronous generator with a continuous rating of 47,000 KVA, 3600 RPM, 13,800 volts, 1966 amps, .85 PF, 3 phase, 60 HZ through a John Brown reduction gear box type A5984, s/n J3581. The gas turbine generator has 92,290 total operating hours, 2,706 starts.



### **7484 20 MW Condensing System Turbine Generator**

Used 20 MW ABB Alstrom (GEC Ahlstrom) (GE) condensing system turbine generator, built 1989, with inlet steam conditions 600 PSI at 700 F. Brush generator rated at 21,667 KVA, 19,500 KW, 13,800 volts, 3 phase, 60 HZ.




### **7478 Substation Transformer**

Used 42/56/70 MVA, Delta Star substation transformer, 3 phase, 60 HZ, class OA/FA/FA, 65 degrees C rise. High voltage 26,400 volts, low voltage 13,800 volts.



## PUMPS

 **7480** Used 515 GPM Sulzer pumps at 1,882 Ft. Head centrifugal, size 3 x 6 x 9 type MSD, 6 stages, Motor-350 HP, 3575 RPM, 4160 V, s/n 1D185.




**7481** 98 GPM Sulzer Pump, Size 2x4x8.75, 4 Stages, 75 HP

**7479** 80 GPM Sulzer Pump, Size 2x4x8.75, 4 Stages, 75 HP

## TANKS

**7489** 20,000 Gal Vertical Fiberglass Tank, Atmos @ 120 F, Built 1989

 **7477** Approx. 6,000 gallon NSM Industries Inc. carbon steel horizontal high pressure storage tank. Ammonia Storage tank #m-21026-7, rated 300 psi @ 650 F, Min Design Temp -30 F @ 300 psi, 36" Top Manway, Length 18 1/2 Feet, 81" Dia. Serial #19434, Built 1989, national board stamped. Previous Use: Ammonia Storage.



**7490** 6,000 Gal Horizontal Carbon Steel Tank, 15# @ 120 F, Built 1989

**7491** 6,000 Gal Horizontal Carbon Steel Tank, 15# @ 120 F, Built 1989

## COOLING TOWERS

**7475** 803 Ton Baltimore Aircoil Cooling Tower, 4470 GPM, (2) 60 HP, Built 1998


**7476** 803 Ton Baltimore Aircoil Cooling Tower, 4470 GPM, (2) 60 HP, Built 1998

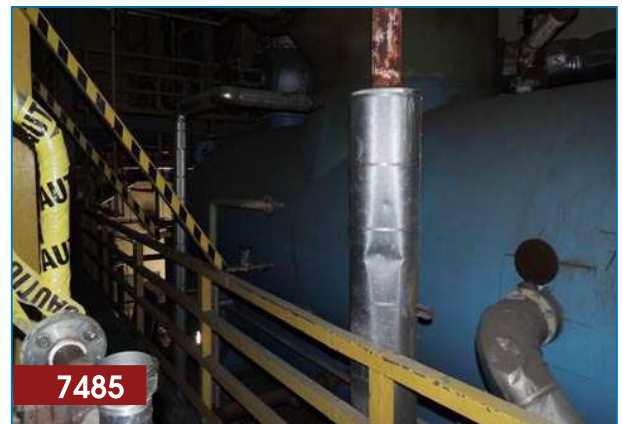
## AIR COMPRESSORS

**7482** 180 CFM Atlas Copco Air Compressor, 132#, 40 HP, Built 1993

**7483** 180 CFM Atlas Copco Air Compressor, 132#, 40 HP, Built 1992

## CONDENSERS

 **7485** Used 20,000 Sq. Ft. Joy Ecolaire Horizontal Admiralty Brass Shell & Tube Heat Exchanger / Condenser, (4,664) 3/4" OD X 18Ga. X approx, 22' long tubes – B111/443 Admiralty Tube Sheets – Muntz B171/365, Weight – approx. 110,000 lbs. Previous Use: Steam Turbine Condenser



**7486** 2,708 Sq Ft U-Tube Shell & Tube Heat Exchanger, 250#/50#, Built 1989

## CRANES

**7488** 20 Ton Gaffney Bridge Crane, 40 Ft span, Remote Controlled

**50 Complete  
Plants, 5,000  
Pieces of  
Equipment**

[www.phxequip.com](http://www.phxequip.com)

